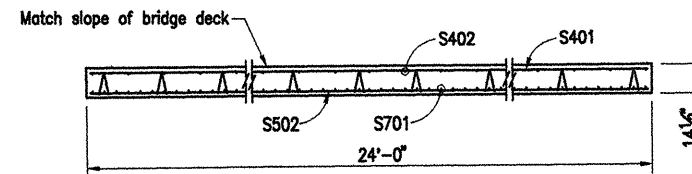
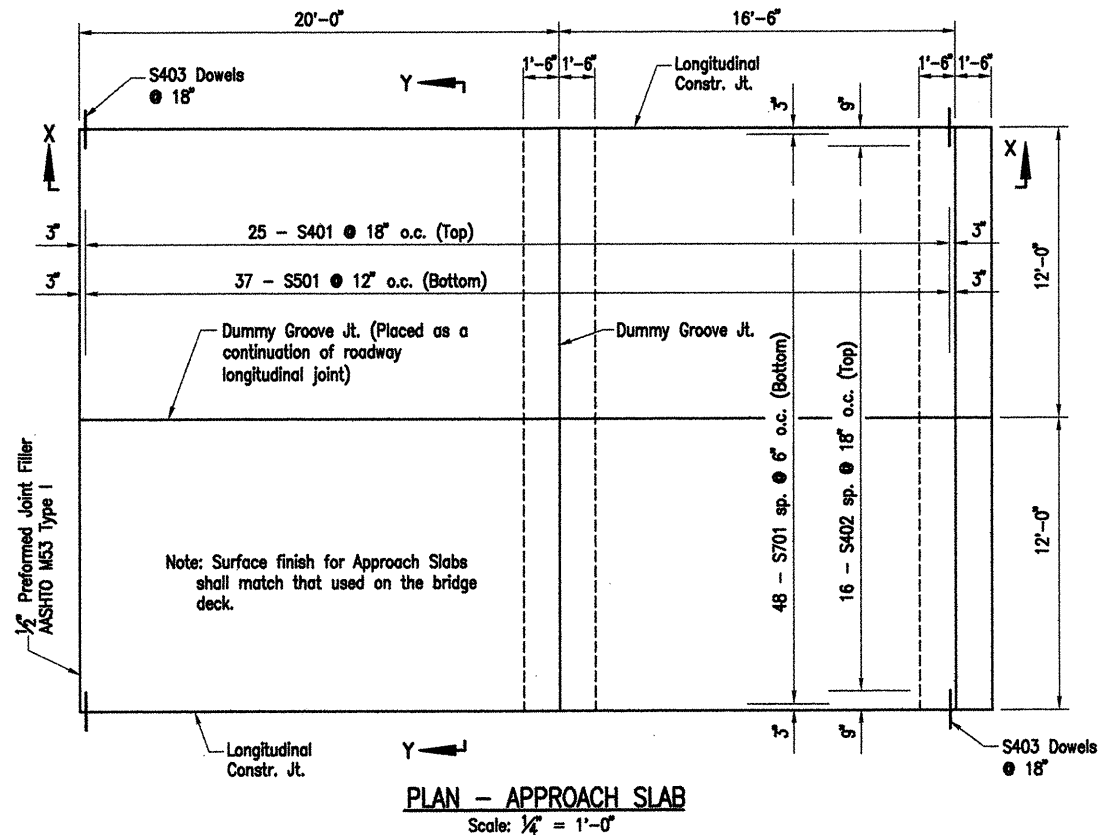


ACAD SCALE: 1/4"=1'-0"

COMPANY\1999 JOBS\99-044 AHTD\WHITERIVER\JOB 110394\apps\slab1&2

DATE REVISED	DATE FILMED	DATE REVISED	DATE FILMED	FED. ROAD NO.	STATE	FED. AID PROJ. NO.	SHEET NO.	TOTAL SHEETS
					ARK.			
				JOB NO.	110394	102	196	
				06830	APPR. SLABS	42014		



SECTION Y-Y
N.T.S.

BAR LIST-PER BENT

Mark	No.	Req'd	Length	P.D.	Bending Diagrams
S401	25	23'-8"	Str.		Dimensions are out to out of bars.
S402	16	36'-2"	Str.		
S403	50	3'-0"	Str.		
S501	37	23'-8"	Str.		
S701	48	36'-2"	Str.		
F401	16	23'-8"	Str.		
F402	24	6'-6"	2"		
F403	24	9'-6"	2"		
F501	24	2'-8"	Str.		

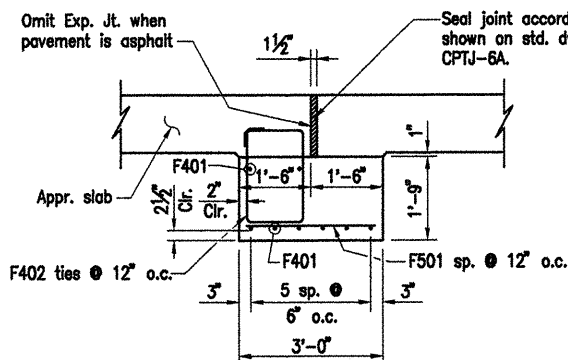
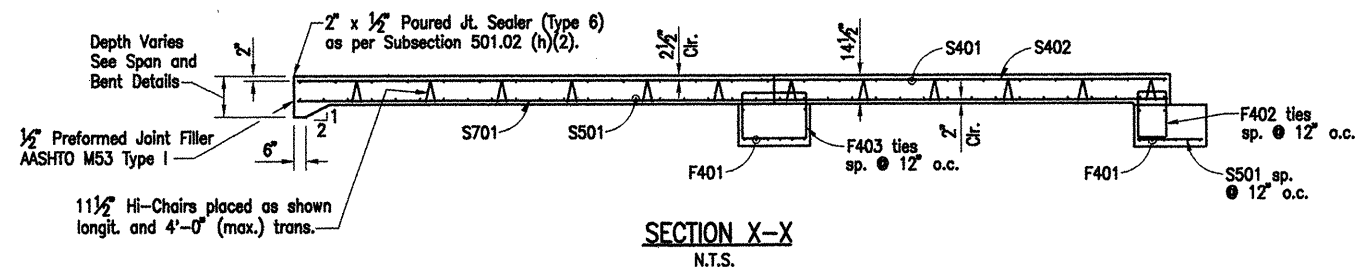
GENERAL NOTES:

- All concrete shall be Class "S". (AE) (f'c = 4,000 psi).
- Reinforcement steel shall conform to AASHTO M31 or M53, Grade 60. (fy = 60,000 psi).
- Approach slabs will be measured and paid for in accordance with Section 504 of the Standard Specifications.
- This drawing to be used with Dwg. 42015.
- See Approach Slab and Approach Gutter location for Alternate No. 1 on Dwg. 41959.
- See Approach Slab and Approach Gutter location for Alternate No. 2 on Dwg. 42021.

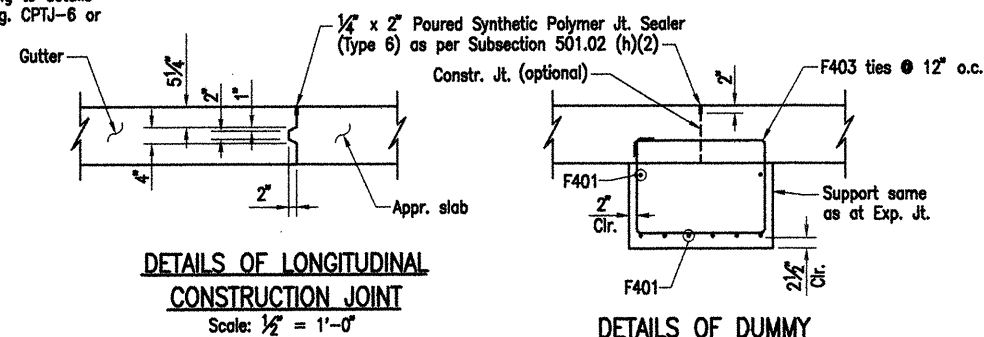
TABLE OF QUANTITIES

ONE APPROACH SLAB

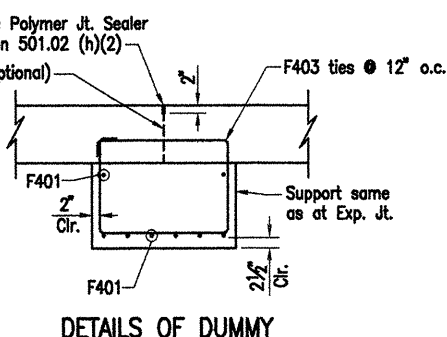
Reinforcing Steel (Lbs.)	Concrete (c.y.)
5919	48.5



DETAILS OF SUPPORT
AT EXPANSION JOINT
Scale: 1/2" = 1'-0"



DETAILS OF LONGITUDINAL
CONSTRUCTION JOINT
Scale: 1/2" = 1'-0"

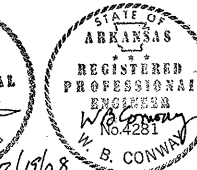
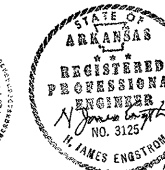


DETAILS OF DUMMY
GROOVED JOINT
Scale: 1/2" = 1'-0"



SCALE IN FEET

BRIDGE ENGINEER



ALTERNATE NO. 1 & NO. 2

DETAILS OF SPECIAL APPROACH SLAB

WHITE RIVER STR. & APPRS.
(CLARENDON) (PH. II) (F)
MONROE COUNTY

ROUTE 79 SEC. 13
ARKANSAS STATE HIGHWAY COMMISSION
LITTLE ROCK, ARK.

Engstrom/Modjeski and Masters, Inc.

DRAWN BY: PMR DATE: Nov. 07 FILENAME: b110394_g1
CHECKED BY: YO DATE: Nov. 01 SCALE: 1/4"=1'-0"
DESIGNED BY: FS DATE: Nov. 01
BRIDGE NO. 06830 DRAWING NO. 42014